

# YOUR GUIDE TO *Selling*

with JBF Eden Prairie & Edina

**JUST BETWEEN  
FRIENDS**

## Let's do this together!

If you're a First-Time Seller, you'll find everything you need to know —right here in this Guide—to help you turn your outgrown kid items into CA\$H.



**Gather**



**Sort**



**Price**



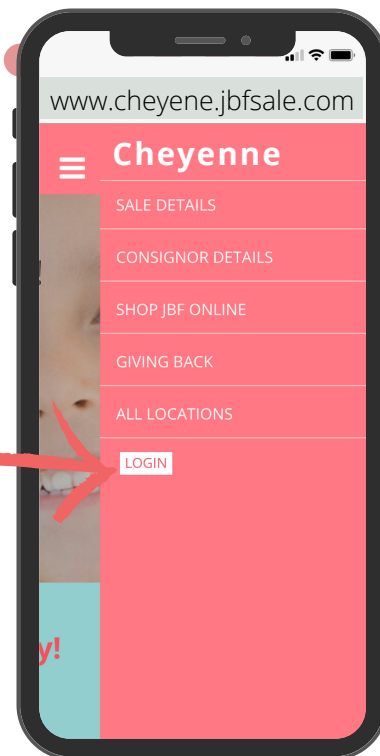
**Prep**



**Drop Off**

## First Things First: REGISTER

Save your spot by registering as a Consignor at the event(s) you prefer.



**Questions?** Join a Facebook Group for quick Q&A.

Edina- <https://www.facebook.com/groups/edinaconsignors>

Eden Prairie- <https://www.facebook.com/groups/edenprairieconsignors>

# STEP #1

# Gather



## Kids Grow Fast!

Each child cycles through a wardrobe every 6 months. So, if you're feeling like you have lots of outgrown clothes in your home, you're not alone!

Plus, you can also sell items you likely have around your home. Here are some places to look for more to sell.

## Check all over your home!

### Bedrooms

- clothing + shoes
- lamps + rugs
- gliders + rockers
- boppies + monitors

### Closets

- sheets + towels
- diapers + new supplies
- step stools
- pillows + blankets
- maternity wear

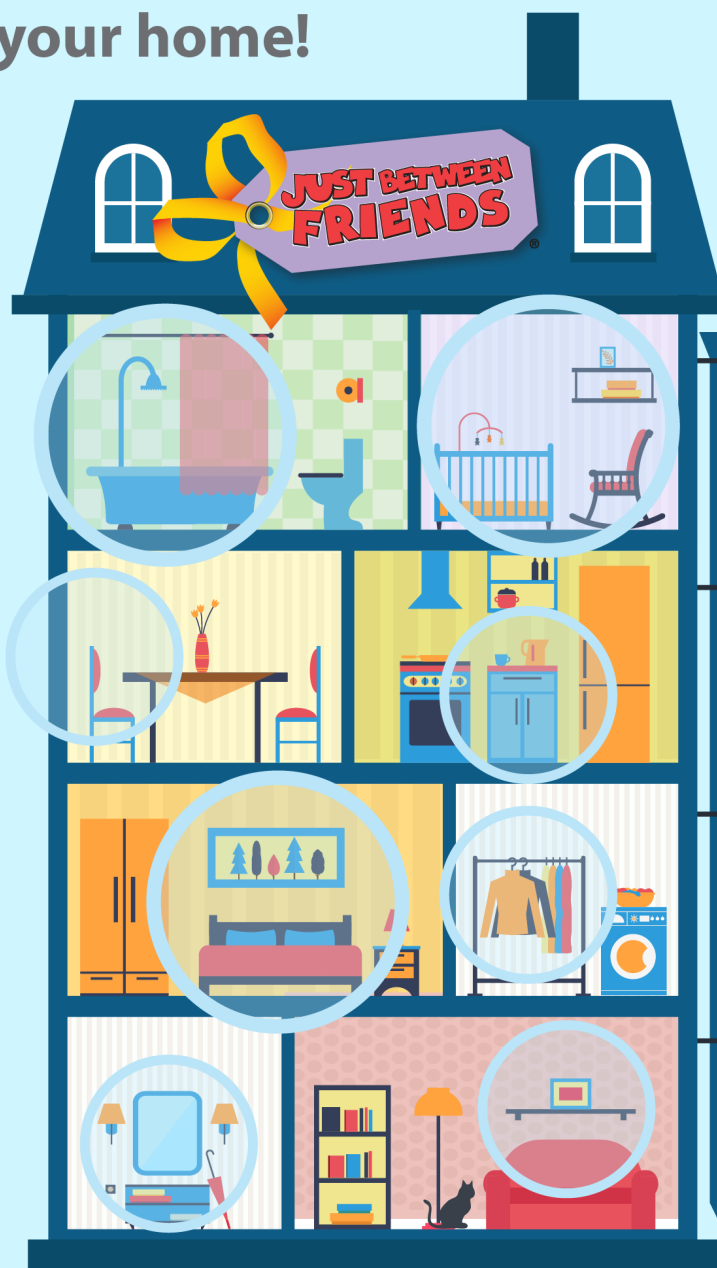
### Playrooms

- puzzles + games
- family DVDs
- dress up + costumes
- crafts + supplies
- instruments
- gaming systems

### Bathrooms

- diaper disposal systems
- bath toys + supplies
- newborn tubs

...and check the garage!



## Have any of these hot-selling items?

### Large toys

- exersaucers
- rockers
- play kitchen sets
- tool bench play sets

### Furniture

- toddler beds
- dressers + bassinets
- changing tables

### Feeding supplies

- new pacifiers
- dishes + lunch boxes
- sippy cups + boosters
- safety items

### Outdoor toys

- bikes + trikes
- scooters + skates
- ride-on toys
- playhouses



# STEP #2 Sort



## Keep | Toss | Sell

It's okay to **KEEP** the items that you just aren't ready to part with yet. **TOSS** the items that are too well-loved (stains, missing pieces, or are not working).

## SELL the items that meet these 4 C's:

### CLEAN

The newer it looks, the better it sells. Check carefully for stains and holes in clothing. Clean all clothing and non-clothing items thoroughly.

### CURRENT

Sell warm weather clothing and shoes at our Spring/Summer sale. Sell cold weather items at our Fall/Winter sale. Shoppers love current styles that are in fashion.

### COMPLETE

Be sure all parts & pieces are present before you tag items. Shoppers want to open their items when they get home and find everything in working order.

### COMPLIANT

Important Safety Guidelines apply to car seats, cribs, infant equipment & toys. All of the Recalls & Safety Standards are listed at **jbfsale.com** for you to check each of your items before you sell.



**Safety Waivers Required** for all Cribs & Car Seats

# STEP #3 *Price*



## Shopper-Focused Pricing

Ask yourself, "What price would make me buy this item without hesitation...and brag about my bargain to my friends?"

Retail Price	JBF Clothing Price	Pricing Non-Clothing Items	
less than <b>\$10</b>	<b>\$1-2</b> <b>Value Brands:</b> Cherokee, Circo, Faded Glory, Garanimals	Toys Books Baby Gear Furniture Electronics Strollers + Joggers Sporting Goods	 <p>Price a little higher for:</p> <ul style="list-style-type: none"> <li>• new with tags</li> <li>• hot selling</li> <li>• like-new</li> <li>• large toys</li> </ul>
less than <b>\$20</b>	<b>\$3-6</b> <b>Standard Brands:</b> Carter's, Old Navy, Children's Place, Nike	<b>60-80% off retail</b>	<p>Price a little lower for:</p> <ul style="list-style-type: none"> <li>• infant clothing</li> <li>• play clothes</li> <li>• good condition</li> <li>• maternity</li> </ul> 
more than <b>\$20</b>	<b>65-75% off retail</b> <b>Boutique Brands:</b> Crewcuts, Mud Pie, Matilda Jane	<b>Want to SELL Even MORE?</b> Choose to REDUCE, which allows your items to sell at 50% off during discount sale days	



## Bundle Items to Save Time

As you are thinking about prices, consider creating sets or bundles. Put an outfit together, or a set of same-size onesies. Bundle 6 pair of socks together, or several superhero figures. Shoppers love it, and you only have to create one JBF tag!

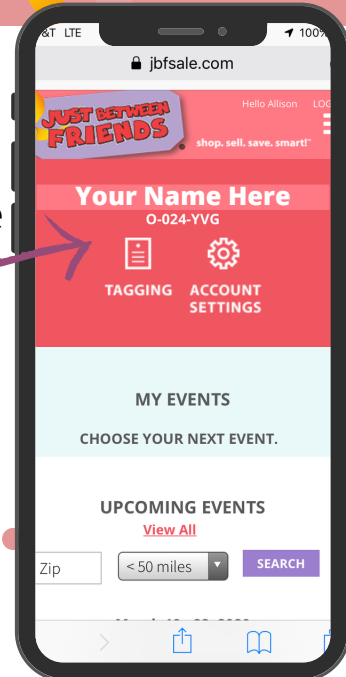
# STEP #3 *Price*



## Where to Create Your Tags

Now that your items are inspected and bundled, it's time to log in to your JBF Profile and enter your tag data.

1. [www.jbfsale.com](http://www.jbfsale.com)
2. login
3. click on TAGGING



## Creating Tags

Item Description\* 2pc Baby GAP navy blue hoodie and joggers

Price\* 3.50

Category Clothing-Girls

Size 18 mo

Reduce ☒

Donate ☒

Quantity\* 1

Include brand, colors, number of pieces included

You choose the price

Choose the category that fits best (leave blank if you can't decide)

Indicate size for clothing and shoes

A check mark here will allow your item to sell at 50% off on Half Price Day

A check mark here will allow your item to be donated if unsold (also available for sort staff to purchase at 75% off)

This feature is if you have more than one of the exact same item and want to create several tags at once

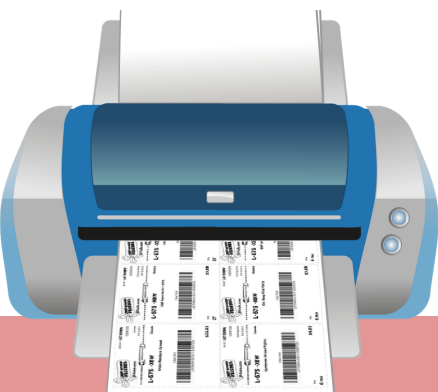
## TIP! Talk-to-Text

If you are entering tags on your mobile device, use talk-to-text to go even faster.



## Print Your Tags

Print tags on 8.5"x11" white cardstock. Tags print 9 per page.



# STEP #4 *Prep*



## Preparing Your Items & Attaching Tags

Now that your JBF tags are printed, cut them apart and sort them by gender, type and size to make this step go smoother.



## Gather these supplies to make your prep faster:

- scissors
- clear self-sealing bags (zip-loc)
- plastic hangers
- zip-ties
- clear tape & painter's tape
- ribbon/string
- scissors
- safety pins or tagging gun
- hole-punch
- clear wrap

## TOYS & GEAR

### Two Essentials:

- Tag is attached securely (won't fall off) &
- All pieces secured together (won't separate; tape bags closed)



# STEP #4 Prep



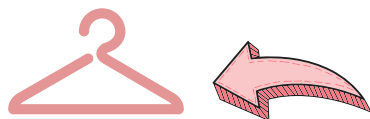
## CLOTHING

### Hanging & Tagging Clothing

Put hanging clothing on a **plastic hanger**. Bundle socks, infant mittens & hats, as well as accessories in clear self-sealing bags and tape shut with clear packing tape. Attach JBF tag with safety pin or tagging gun.

### Hanger Direction

Be sure the hanger hook opens to the left, like a question mark. Attach JBF tag to front of item.



**\* Please use plastic hangers**



### Creating Outfits

It's okay to bundle items into sets if they are the same size.

Secure pieces to hanger using safety pins and either attach additional item(s) with safety pins (see below) or put on separate hanger and zip-tie hangers tightly together so outfit remains together as a set.



### Hanging Multiple Items on a Hanger

Multiple items—that are all the same size—can be hung on a single hanger. Use a safety pin to attach pants/skirts to hangers.

# STEP #4 *Prep*



## **Sleepsacks/Swaddles**

Hang Sleepsack and swaddles on a hanger like you would with clothing and secure with safety pins. These will hang in a separate section near infant items.



## **Accessories**

Use clear bags to bundle sets of socks, hair accessories, infant mittens and hats. Display neatly so shopper can see well. Place JBF tag inside and tape bag closed.



## **Hats**

Simply attach JBF tag to hats using a safety pin or tagging gun. No need to use a bag.



## **Tagging Gun**

If you use a tagging gun to attach JBF tags, only puncture the garment tag or an inside seam so that you do not damage the fabric.

**DO NOT GO THROUGH FRONT OF SHIRT-  
This will leave a hole :(**

## STEP #5

# Drop Off

JUST BETWEEN  
FRIENDS



### You did it!

Now that your items are tagged, you'll want to pack items **organized by type and size** so that your Drop Off process is easy and fast.



## Seller Drop Off

1

Plan for 60-minutes to drop off your items. Longer if you have 250+ items to drop off. Drive to venue...Park...Enter...and **Check In**...you will receive your Presale Tickets as you leave!

2

You'll hang all clothing in gender/size areas on the racks. Then you will place all your non-clothing items in the coordinating drop zone (toys, shoes, books, etc.). We will inspect these items after you leave. Pulled items will be waiting for you at pick up.

3

**All Large Items** will be inspected at drop off. This is any item that does not fit in an Ikea style bag or would be difficult for a shopper to carry around with them while they shop (cribs, strollers, bumbo seats, outdoor toys, bikes, etc.).

4

After your Large Items pass inspection, you will attach a yellow claim ticket to the items which make it easier for shoppers to purchase your items during the sale.

*That's It! You're Done!*

# During the Sale

**JUST BETWEEN  
FRIENDS**



*Make time to*  
**SHOP**

**MAKE SURE YOU GET THE BEST  
DEALS FOR YOUR FAMILY!**



## **Watch Your Consignor Check Grow**

You can view your sold items! Log in to your JBF Profile, click on TAGGING, then choose REPORTS.



## **Share Free Tickets**

Now is the time to tell everyone to shop! The more you share, the bigger your consignor check will grow. Be sure all the families in your life know about the resource of JBF this week!



## **Unsold Items Donated to Charity**

Donated items are distributed to help local families through our Charity Partner, Grace Clothing Closet. They give items to families in need in the Twin Cities. You'll receive a donation receipt for tax purposes.